



aerospace  
climate control  
electromechanical  
filtration  
**fluid & gas handling**  
hydraulics  
pneumatics  
**process control**  
sealing & shielding



# Process Control Product Selection Guide

Catalog 4204 - Process



ENGINEERING YOUR SUCCESS.

## Table of Contents

Introduction .....	2
Fittings. ....	4
Valves	
Ball/Plug Valves .....	6
Check Valves .....	8
Filters .....	10
Relief Valves.....	11
Bleed and Purge Valves....	12
Metering Valves .....	13
Needle Valves .....	14
Manifold Valves.....	16
Diaphragm Valves.....	18
Regulators	
Pressure Regulators.....	20
Back Pressure Regulators....	22
Vaporizing Regulators .....	23
Flow Controllers .....	24
PFA/PTFE Products.....	25
Analytical Systems.....	26
Hose/Tubing/	
Quick Couplings .....	28
Tools and Accessories .....	29
Sanitary and	
BioPharmaceutical.....	30

## Parker Hannifin Corp.

Parker is the world's leading diversified manufacturer of motion and control technologies and systems, providing precision-engineered solutions for a wide variety of commercial, mobile, industrial and aerospace markets.

- 263 manufacturing sites around the world
- 8,200 distributors
- 400,000 customers
- 3,200 product lines
- Listed as PH on the NYSE

## Process Control

Parker Hannifin is dedicated to being the global leader in the design, manufacture and distribution of high quality, critical flow and ultra high purity components for the Petrochemical, Chemical Processing, Oil and Gas, Power Generation, Water Analysis, Biopharmaceutical, Semiconductor Manufacturing and Analytical Equipment industries.

## Global Distribution

With over 8,200 distributors, our worldwide distribution network is the strongest in the industry, providing comprehensive technical support and after-sales support. This global support provides optimum services for projects worldwide.



## Premier Customer Service

Parker is driven to provide our customers with premier customer service through on time delivery of quality products and value added services such as the Veriflo Division Express Service Program, custom assemblies and tube fabrication classes.

## Engineering Excellence

By remaining focused on our customers we have been able to introduce products that not only solve our customer's problems but address specific industry needs and issues.

Using the latest in virtual engineering tools, Parker engineers have reduced the time to develop, test and manufacture our latest product innovations.

To assist our customers with their designs, our 2D and 3D CAD drawings are available online.

## Heat Code Traceability

Parker offers Heat Code Traceability (HCT) to meet or exceed all applicable specifications to assure our customers that they are working with a high quality product. It acts as an assurance for today and for tomorrow.

These specifications ensure high quality instrumentation components for use in fossil fuel power plants, chemical refineries, general instrumentation and processing plants. Requirements are now emerging in the semiconductor and pharmaceutical industries.

Not only are the materials continuously monitored, Parker adheres to a formal, documented Quality Assurance Program that controls manufacturing, marking, testing and examination procedures, cleaning and packaging.

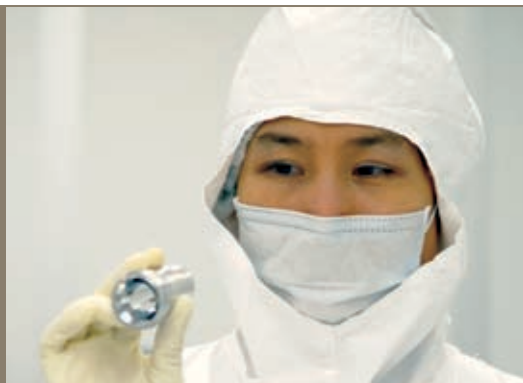


HCT is offered on the following quality stainless steel components:

- CPI™ and A-LOK® Tube Fittings
- UltraSeal™ and VacuSeal™ Fittings
- Ball, Needle and Check Valves
- Instrumentation Pipe Fittings
- Orbital Tube Weld Fittings
- MiniButtweld™ Fittings
- Manifolds and Flanged Products
- Filters



# Fittings



Parker Instrumentation Tube Fittings are designed as leak-free connections for process, power, and oil and gas instrumentation applications handling liquids, gases and chemicals. Parker's instrument tube fittings have been engineered and manufactured to consistently provide the highest level of reliability. All working pressures have been calculated using the maximum allowable stress levels in accordance with ANSI B31.3.



## **CPI™ Fittings** (Catalog 4230/4233)

- Three piece simple design to work on all instrumentation grade tubing
- Molybdenum Disulfide coated nuts to prevent galling and provide lubrication
- Single ferrule system treated with Suparcase™ technology to insure sealing
- Superior body seat surface finish to seal gases and liquids
- Single ferrule technology to provide excellent anti-vibration performance
- Excellent in high thermo cycling applications



## **A-LOK® Fittings** (Catalog 4230/4233)

- Industry standard design for all instrumentation grade tubing
- Silver coated threads to reduce galling
- Back ferrule is treated with Suparcase™ technology to provide a strong mechanical grip on the tube
- Industry double ferrule design for system specifications



## **MPI™ Fittings** (Catalog 4234)

- Compression fitting for medium pressure applications up to 15,000 psi (1034 bar)
- Inverted body and nut design for added strength with thick-wall tubing
- Longer thread area for improved performance and resistance to vibration
- Molybdenum Disulfide coated nuts to prevent galling and for higher temperature applications
- Installation and rework time reduced by 50%



### Phastite® (Catalog 4235-PH)

- Option for welded systems
- Simple assembly process provides high integrity connections, first time every time
- Installation time reduced to seconds
- No loose parts, supplied factory pre assembled
- Permanent push fit tube connector with working pressures up to 13,300 psi (917 bar)



### Instrumentation Pipe Fittings (Catalog 4260)

- Manufactured from 316 stainless steel for superior corrosion resistance
- Available with NPT and ISO thread configurations
- All exposed threads protected to prevent damage
- All pipe threads meet ANSI B1.20.1 requirements



### Welded Fittings (Catalog 4280)

- Available in socketweld, butt weld and automatic butt weld connections
- Manufactured to meet ASME Section III, and ANSI B31.1 and B31.7 codes
- Permanent, leak free connection
- For critical applications and high temperatures such as steam

Fitting	Working Pressure	Connection Type	Size Range
CPI™	Instrumentation Tubing*	Single ferrule compression	1/16" - 2 1/2mm - 25mm Tube Diameter
A-LOK®	Instrumentation Tubing*	Double ferrule compression	1/16" - 2 1/2mm - 25mm Tube Diameter
MPI™	Up to 15,000 psi (1034 bar)	Inverted compression	1/4" - 1" Tube Diameter
Phastite®	Up to 13,300 psi (917 bar)*	Permanent crimp*	1/4" - 1/2"/6mm - 12mm Tube Diameter
Weld-lok™	Instrument Tubing*	Tube Socket Weld	1/8" - 2" Tube Diameter
Pipe	Up to 6000 psi (414 bar)	NPT Pipe Thread	1/16" - 2" Pipe Size
Pipe Adapters	Up to 6000 psi (414 bar)	NPT, BSPT, and BSPP Pipe Threads	1/8" - 1"

\*Maximum suggested working pressure as indicated in Instrument Tubing Selection Guide Bulletin 4200-TS.

## Ball/Plug Valves



### MB Series (Catalog 4121-MB)

- One piece compact barstock design
- Center off position for 3-way
- 2-way, inline, angle; 3-way, 4-way and 5-way
- Patented seat design
- Standard drop-in replacement



### B Series (Catalog 4121-B)

- 2-way, 3-way diverting or spring loaded 3-way selector designs
- Wide temperature application range -65°F (18°C) to +450°F (232°C)
- Rated for up to 6000 psi (413.7 bar)
- Widest variety of seats, seals and port connections
- Connections include CPI™, A-LOK®, male and female NPT, UltraSeal™ and VacuSeal™



### SWB Series (Catalog 4125-SWB)

- Zero clearance body allows repairs in field
- Spring loaded seats and stem seals
- Fully enclosed body bolts
- ISO-type actuator mounting design
- Available up to 1" full flow design



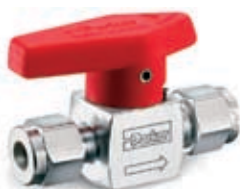
### HB Series (Catalog 4121-HB)

- Compact FNPT version for tight work areas
- Full operating pressure in any port
- PEEK™ trunnion bearings provide high cycle life
- 10,000 psi (689 bar) rating with PEEK™ seats
- Excellent for CNG



### MPB Series Ball Valve (Catalog 4234)

- 2-way and 3-way ball valve for severe service applications
- Designed for 1/4 and 1/2 turn media shutoff or switching applications



### PR Series (Catalog 4126-PR)

- Low operating torque
- Optional locking device, downstream vent and metal tee handles
- Typically used in laboratories
- Most compact 90° actuated valve



## Pneumatic/Electric Actuators (Catalog 4123)

- 60 Series pneumatic actuators provide 90° and 180° rotation in both double acting and spring return models
- 70 and 80 Series electric actuators provide 90° and 180° actuation for our B, MB, HB, SWB series ball valves



## HBV Series (Catalog 4190-HV)

- Suitable for the most demanding applications in the oil, gas and process control industries
- Integral compression ends available, eliminating taper threads and thread sealants
- Two piece barstock design reduces body leakage paths
- Complies with ANSI/ASME B16.34 requirements where applicable
- NACE MR-01-75/ISO 15156 compliant materials available
- Fire safe option



## 20K Hi-Pro Ball Valve (Catalog 4190-HH/20K)

- Designed for cold working pressure applications of up to 20,000 psi (1,379 bar)
- Two piece body design
- Bi-directional
- Low torque operation
- Tru-Loc® anti-vibration locking system on gland adjuster for 100% security

Valve Groups	Model Series	Product Description	Maximum Operating Pressure	Temperature		Cv	Body Material			Actuation			Seat/Seal Material								End Connection Size Range		Catalog
				Min	Max		Max	Brass	Stainless Steel	Alloy	Manual	Pneumatic	Electric	PCTFE	Buna-N Rubber	Ethylene Propylene Rubber	Highly Fluorinated Fluorocarbon Rubber	PFA	GRAFOIL®	PEEK	PTFE	Min	
Ball/Plug Valves	MB	Mini Barstock Ball Valve	3000 psi 207 bar	-65 F -54 C	300 F 149 C	11.00	x	x		x	x	x					x				1/16 in 3mm	3/4 in 12mm	4121-MB
	B	Ball Valve	6000 psi 414 bar	-65 F -54 C	400 F 204 C	6.40	x	x	x	x	x	x	x	x	x			x	x	1/16 in 3mm	3/4 in 12mm	4121-B	
	SWB	Swing Out Ball Valve	2500 psi 172 bar	-65 F -54 C	600 F 316 C	35.00		x		x	x	x		x	x		x	x	x	1/4 in n/a mm	1 in n/a mm	4125-SWB	
	HB	Ball Valve	10000 psi 689 bar	-65 F -54 C	400 F 204 C	1.00		x		x	x	x	x	x	x			x		1/4 in 6mm	1/2 in 12mm	4121-HB	
	MPB	Med. Pressure Ball Valve	20000 psi 1379 bar	-10 F -23C	400 F 204 C	8.80		x		x	x	x		x	x	x	x		x	1/8 in n/a mm	1 in n/a mm	4234	
	PR	Plug Valve	3000 psi 207 bar	-10 F -23C	400 F 204 C	3.20	x	x						x	x	x	x			1/8 in 3mm	1/2 in 12mm	4126-PR	
	HBV	Ball Valve	10,000 psi 689 bar	-65 F -54 C	450 F 232 C			x	x	x	x							x	x	x	1/8 in 6mm	1 in 25mm	4190-HBV
	20K HPBV	Hi-Pro Ball Valve	20,000 psi (1379 bar)	-4 F -20C	392 F 200 C	1.56		x											x		1/4 in 6mm	9/16 in 14mm	4190-HH 20K

## Check Valves



### C Series (Catalog 4130-C)

- Resilient, custom molded, seat design
- Back stopped poppet to minimize spring stress
- Cracking Pressures: 1/3, 1, 5, 10, 25, 50, 75 and 100 psi (.023, .069, .345, .69, 1.72, 3.45, 5.17, 6.9 bar)
- Port connections include male and female NPT, CPI™, A-LOK®, UltraSeal™, VacuSeal™, BSP, SAE and Seal-Lok®



### CO Series (Catalog 4130-CO)

- Suitable for applications requiring high integrity leak rates and re-sealing capabilities
- Seal integrity to  $4 \times 10^{-9}$  std. atm-cc/sec
- Back stopped poppet to minimize spring stress
- Cracking Pressures: 1/3, 1, 5, 10, 25, 50, 75 and 100 psi (.023, .069, .345, .69, 1.72, 3.45, 5.17, 6.9 bar)
- Available with highly fluorinated fluorocarbon rubber
- Only check valve with published helium leak rate



### CB Series (Catalog 4130-CB)

- Reduces maintenance while improving performance requirements on dual fuel turbines
- Cracking Pressures: 1, 5, 10, 25, 50, 75, 100 and 120 psi (.023, .069, .345, .69, 1.72, 3.45, 5.17, 6.9, 8.27 bar)
- Rugged ball design for demanding applications
- For high temperatures with highly viscous medias



### MPC Series (Catalog 4234)

- Variety of elastomeric poppet seals
- 5 psi (.345 bar) cracking pressure
- MPI™, cone & thread and female NPT connections available
- For pressures up to 20,000 psi (1379 bar)





## MPCB Series (Catalog 4234)

- Metal to metal seat for use in applications that cannot accept fluorocarbon rubber
- 5 psi (.345 bar) cracking pressure
- MPI™, cone & thread and female NPT connections available
- For pressures up to 20,000 psi (1379 bar)



## LC Series (Bulletin 4130-LC)

- For extreme temperature applications
- The gravity assisted poppet uses reverse flow to achieve a seal to within 99.9% of forward flow

Valve Groups	Model Series	Maximum Operating Pressure	Temperature		Cv	Cracking Pressure	Body Material		Seal Material								End Connections		Catalog
			Min	Max	Max	Max	Brass	Stainless Steel	Parkerfill/ Parkercon	Buna-N Rubber	Ethylene Propylene Rubber	Highly Fluorinated Fluorocarbon	Fluorocarbon Rubber	Neoprene Rubber	Metal	PTFE	Min	Max	
Check Valves	C	6000 psi 414 bar	-65 F -54 C	400 F 204 C	6.70	100 psi 6.9 bar	x	x		x	x	x	x	x		x	1/8 in 3 mm	1 in 25 mm	4130-C
	CO	6000 psi 414 bar	-15 F -26 C	400 F 204 C	2.70	100 psi 6.9 bar		x		x	x	x	x				1/4 in 6 mm	1/2 in 12 mm	4130-CO
	CB	3000 psi 207 bar	-65 F -54 C	450 F 232 C	6.00	120 psi 8.27 bar		x	x								3/8 in	3/4 in	4130-CB
	MPC	20000 psi 1379 bar	-10 F -23 C	400 F 204 C		5 psi .345 bar		x		x	x	x	x				1/4 in	1 in	4234
	MPCB	20000 psi 1379 bar	-100 F -73 C	600 F 316 C		5 psi .345 bar		x							x		1/4 in	1 in	4234
	LC	6000 psi 414 bar	-100 F -73 C	900 F 482 C	2.30			x							x		1/8 in	1/2 in	4130-LC

## Filters



### F Series (Catalog 4130-F)

- Replaceable sintered 316 stainless steel filter element
- Optional 250 and 450 micron wire cloth filter elements



### FT Series (Catalog 4130-FT)

- Filter elements are easily replaced without disconnecting the tube lines
- Fast Loop bypass option enables a continuous self cleaning flow
- Replaceable sintered 316 stainless steel filter element
- Optional 250 and 450 micron wire cloth filter elements



### MPF Series (Catalog 4234)

- High pressure applications up to 20,000 psi (1379 bar)
- Sintered 316 stainless steel filter disc
- Inline filters help protect valuable equipment in the process system
- MPI™, cone & thread and female NPT connections available

Valve Groups	Model Series	Product Description	Maximum Operating Pressure	Temperature		Cv	Micron Range	Body Material		Seal Material						End Connections		Catalog	
				Min	Max	Max		Brass	Stainless Steel	Fluorocarbon Rubber	Buna-N Rubber	Ethylene Propylene Rubber	Highly Fluorinated Fluorocarbon	Neoprene Rubber	PTFE	Silver Plated Nickel Alloy	Min		Max
Filters	F	Inline Filter	6000 psi 414 bar	-65 F -54 C	400 F 204 C	3.40	.5 to 500	x	x	x	x	x		x	x		1/8 in 3mm	1 in 25mm	4130-F
	FT	Tee Filter	6000 psi 414 bar	-100 F -73 C	900 F 482 C	2.50	.5 to 500	x	x	x	x	x	x	x	x		1/8 in 6mm	1/2 in 12mm	4130-FT
	MPF	Medium Pressure Filter	20000 psi 1379 bar	-10 F -23C	400 F 204 C	0.59	.5 to 100		x						x		1/4 in	9/16 in	4234

# Relief Valves



## RL4 Series (Catalog 4131-RL)

- Handle for field maintenance
- Externally adjustable pressure settings while valve is in operation
- Seven different springs
- Manual override option with positive stem retraction is available for the full working pressure range
- Color coded springs and labels indicate spring cracking range



## RH4 Series (Catalog 4131-RH)

- Eight springs
- Manual override option with positive stem retraction is available for pressures up to 1500 psi (103 bar)
- Preset from factory and comes with standard springs



## HPRV Proportional Relief Valve (Catalog 4190-HPRV)

- Captured moulded seat design is blow-out and chip resistant
- Color coded springs and labels indicate spring cracking range
- Unique Tru-Loc facility prevents accidental adjustment
- Low friction stem seal design prevents friction which increases accuracy of cracking pressure and reseal pressure
- Balanced poppet design ensures consistent cracking pressure regardless of system back pressure
- Multiple end connections available

Valve Groups	Model Series	Maximum Operating Pressure	Temperature		Cv	Body Material	Seal Material					End Connections		Catalog
			Min	Max			Buna-N Rubber	Ethylene Propylene Rubber	Highly Fluorinated Fluorocarbon	Fluorocarbon Rubber	Neoprene Rubber	Min	Max	
Relief Valves	RL	400 psi 28 bar	-70 F -57C	400 F 204 C	0.8	x	x	x	x	x	x	1/4 in 6mm	1/4 in 8mm	4131-RL
	RH	6000 psi 414 bar	-70 F -57C	400 F 204 C	0.4	x	x	x	x	x	x	1/4 in 6mm	1/4 in 8mm	4131-RH
	HPRV	6000 psi 414 bar	-45 F -43C	250 F 121 C	.41	x		x	x	x	x	1/4 in 6mm	1/4 in 6mm	4190-HPRV

## Bleed and Purge Valves



### BV Series (Catalog 4133-BP)

- Recommended for use in bleeding hydraulic systems
- Multi-valve manifolds or gauge/root valves
- Valve vents line pressure to atmosphere or to containment



### PG Series (Catalog 4133-BP)

- Vent hole in the cap bleeds, drains or purges system pressure
- Crimped cap ensures safe relief of system pressures
- Optional PTFE ball requires only finger-tight torque to achieve a leak-tight seal

Valve Groups	Model Series	Maximum Operating Pressure	Temperature		Cv 0.1	Body Material			End Connections		Catalog
			Min	Max		Brass	Stainless Steel	Alloy	Min	Max	
Bleed and Purge Valves	BV	10000 psi 690 bar	-65 F -54 C	850 F 454 C	x		x	x	1/4"	1/2"	4133-BP
	PG	4000 psi 276 bar	-65 F -54 C	400 F 204 C		x	x	x	1/8"	1/2"	4133-BP
	MPBV	30000 psi 2068 bar	-10 F -23C	400 F 204 C			x		9/16"	9/16"	4234



## Metering Valves



### N Series (Catalog 4170-N)

- Panel or in-line mounting
- Angle or in-line patterns
- Valve stem threads not in contact with process fluid



### HR Series (Catalog 4170-HR)

- Bubble tight shut-off capability
- High resolution metering valve with limited hysteresis
- Seven optional valve stem tapers

Valve Groups	Model Series	Maximum Operating Pressure	Temperature		Cv	Body Material		Seat Material					End Connections		Catalog
			Min	Max		Brass	Stainless Steel	Buna-N Rubber	Ethylene Propylene Rubber	Highly Fluorinated Fluorocarbon	Fluorocarbon Rubber	Neoprene Rubber	Min	Max	
Metering Valves	NS	2000 psi 138 bar	-50 F -46 C	400 F 204 C	0.040	x	x	x	x	x	x	x	1/16 in 3mm	1/4 in 6mm	4170-N
	NM	1000 psi 69 bar	-50 F -46 C	400 F 204 C	0.100	x	x	x	x	x	x	x	1/8 in 3mm	1/4 in 6mm	4170-N
	NL	1000 psi 69 bar	-50 F -46 C	400 F 204 C	0.200	x	x	x	x	x	x	x	1/8 in 6mm	3/8 in	4170-N
	HR	250 psi 17 bar	-50 F -46 C	400 F 204 C	0.100	x	x	x	x	x	x	x	1/16 in 3mm	1/4 in 6mm	4170-HR

## Needle Valves



### V Series (Catalog 4110-V)

- For positive leak tight shut-off and regulation of fluids
- Choice of three stem types
- Wide variety of size and end connections



### SN6 Series (Catalog 4110-SN)

- Provides shut-off and coarse regulation of liquids and gases
- Choice of two stem types
- In-line and angle patterns
- Ideal cylinder valve



### VQ Series (Catalog 4110-VQ)

- In-line and angle patterns
- Panel mountable
- Color-coded handles
- Quick actuation for low pressure applications



### NP6 Series (Catalog 4110-NP)

- Choice of two non-rotating stem types
- Packing below power threads
- Panel mountable
- Fracture resistant nylon handle



### PV Series (Catalog 4110-PV)

- Roddable, straight through flow path
- Gauge port option
- Bonnet lock plate resists accidental bonnet disengagement
- PEEK™, Acetal, PFA seat materials available



### U Series (Catalog 4110-U)

- Stem packing below the threads isolates the thread lubricant from the flow
- Severe service applications
- Panel mountable
- Ideal for steam blowdown



### HNV Series (Catalog 4190-HV)

- Compact needle valves
- For applications up to 10,000 psi (690 bar)
- Available with integral A-LOK® or CPI™ connections, reducing leak paths and reducing installation costs
- Soft tipped optional seating available for gaseous applications



### RPV Series (Catalog 4190-HV)

- For fluids containing high levels of contamination frequently found in oil and gas processing facilities
- Straight through flow pattern, roddable design
- 100% repeatable bubble tight shut off



### HGV Series (Catalog 4190-HV)

- Up to 10,000 psig (690 barg)
- Compact single and multi port gauge valves
- Soft tipped optional seating available for gaseous applications



### 20K H-Series (Catalog 4190-HH/20K)

- Designed for cold working pressure applications of up to 20,000 psi (1,379 bar)
- Non-rotating spindle for bubble tight shut off
- Externally adjustable gland
- Fine threaded stem raiser gives increased stem sensitivity and accuracy
- Tru-Loc® anti-vibration locking system on gland adjuster for 100% security

Valve Groups	Model Series	Maximum Operating Pressure	Temperature		Cv	Body Material		Actuation		Seat/Seal Material							End Connections		Catalog
			Min	Max	Max	Stainless Steel	Alloy	Manual	Pneumatic	PTFE	Buna-N Rubber	Ethylene Propylene Rubber	Highly Fluorinated Fluorocarbon Rubber	Fluorocarbon Rubber	Silicon Rubber	GRAFOIL®	Min	Max	
20K HNV	V	6000 psi 414 bar	-65 F -54 C	450 F 232 C	1.30	x	x	x		x	x	x		x			1/8 in 3mm	3/4 in 12	4110-V
	SN6	6000 psi 414 bar	-65 F -54 C	450 F 232 C	0.30	x		x		x					x		1/4 in	1/4 in	4110-SN
	VQ	300 psi 21 bar	-20 F -29 C	200 F 93 C	0.80	x		x	x	x	x	x		x			1/8 in 3mm	1/2 in 10mm	4110-VQ
	NP6	6000 psi 414 bar	-70 F -57 C	700 F 371 C	0.60	x		x		x	x	x		x	x		1/4 in 6mm	3/8 in 8mm	4110-NP
	PV	6000 psi 414 bar	-20 F -29 C	400 F 204 C	2.00	x		x			x	x		x	x		1/4 in	3/4 in	4110-PV
	U	6000 psi 414 bar	-65 F -54 C	1200 F 649 C	2.70	x		x		x					x		1/8 in 6mm	1 in 25mm	4110-U
	MPN	20000 psi 1379 bar	-65 F -54 C	800 F 427 C		x		x	x	x					x		1/4 in	1 in	4234
	MPGV	30000 psi 2068 bar	-10 F -23C	400 F 204 C		x		x			x	x		x			9/16 in	9/16 in	4234
	HNV	10000 psi 690 bar	-65 F -54 C	1000 F 538 C	0.35	x	x	x		x						x	1/4 in 6mm	1/2 in 12mm	4190-HV
	HRPV	10000 psi 690 bar	-65 F -54 C	1000 F 538 C	1.80	x	x	x		x					x		1/4 in 6mm	1/2 in 12mm	4190-HV
	HGV	10000 psi 690 bar	-65 F -54 C	1000 F 538 C	0.35	x	x	x		x					x		1/4 in 6mm	1/2 in 12mm	4190-HV
	HVG	6000 psi 414 bar	-65 F -54 C	1000 F 538 C	0.35	x	x	x		x					x		1/4 in 6mm	1/2 in 12mm	4190-HV
	HYNV	10000 psi 690 bar	-65 F -54 C	1000 F 538 C	0.35	x				x						x	1/4 in 6mm	1/2 in 12mm	4190-HV
	20K HNV	20,000 psi 1379 bar	-63 F -54 C	392F 200 C	0.66	x				x							1/4 in 6mm	9/16 in 14mm	4190-HH 20K

## Manifold Valves



### **CCIMS®** (Catalog 4190-CCIMS)

- Close coupled solution for flow measurement applications
- Reductions in installation time of up to 75%
- Reductions in connections and leak paths of up to 85%
- Features phastfit® for rapid transmitter removal and connection



### **Monoflange** (Catalog 4190-FP)

- Compact double block and bleed valves, featuring needle valves
- Reducing installations cost while improving safety through a reduction in leak paths
- Configurable options include single block, double block and double block and bleed
- Available in a range of materials including carbon steel, stainless steel, duplex, alloy 625



### **Pro-Bloc®** (Catalog 4190-FP)

- Compact double block and bleed valves, featuring needle or ball valve options
- Reducing installations cost while improving safety through a reduction in leak paths
- Configurable options include single block, double block and double block and bleed
- Available in a range of materials including carbon steel, stainless steel, duplex, alloy 625



### **Monoflange (Fe) & Pro-Bloc® (Fe)** (Catalog 4190-FP)

- ISO 15848 approved
- Highest possible 'A' class leakage rates achieved
- All threads sealed from the media
- All ball valves are bi-directional
- Firesafe design available





## H-Series (Catalog 4190-PM/4190-FM)

- A comprehensive range of 2, 3 and 5 valve manifolds for pressure and flow measurement applications
- Available with integral PTFree® connections, reducing leakpaths and installation cost
- Available in stainless steel and many exotic alloys, including Hastelloy, 6Mo, MONEL®, and Alloy 625
- Direct or remote mounting options



## HBM Series (Catalog 4190-HBM)

- A complete range of ball valves 10mm ball and needle valve manifolds
- Including block and bleed, and double block and bleed manifold options
- Working pressures up to 10,000 psi (690 bar)
- Available with integral A-LOK® or CPI™ connections, reducing leak paths and installation costs

Valve Groups	Model Series	Product Description	Maximum Operating Pressure	Temperature		Body Material			Packing		Seat/Tip				End Connection Size Range		Catalog
				Min	Max	Carbon Steel	Stainless Steel	Alloy	GRAFOIL®	PTFE	316SS	PEEK™	PCTFE	PTFE	Min	Max	
Manifolds	MF	double block and bleed	ANSI 2500 API 10,000	-65 F -54 C	1000 F 538 C	x	x	x	x	x	x	x	x		1/4 in 6mm	1/2 in 12mm	4190-FP
	PB	double block and bleed	ANSI 2500 API 10,000	-65 F -54 C	450 F 232 C	x	x	x	x	x		x		x	1/4 in 6mm	1 in 25mm	4190-FP
	H2	2 valve manifolds - needle style	10,000 psi 689 bar	-65 F -54 C	1000 F 538 C		x	x	x	x	x	x	x		1/4 in 6mm	1/2 in 12mm	4190-PM
	H3	3 valve manifolds - needle style	10,000 psi 689 bar	-65 F -54 C	1000 F 538 C		x	x	x	x	x	x	x		1/4 in 6mm	1/2 in 12mm	4190-FM
	H5	5 valve manifolds - needle style	10,000 psi 689 bar	-65 F -54 C	1000 F 538 C		x	x	x	x	x	x	x		1/4 in 6mm	1/2 in 12mm	4190-FM
	HBM	2 & 3 valve manifolds ball style	10,000 psi 689 bar	-65 F -54 C	450 F 232 C		x	x	x	x		x		x	1/4 in 6mm	1/2 in 12mm	4190-HBM

## Diaphragm Valves



### NOVA Series (Catalog 4515)

- General purpose, high cycle, compact valve
- For regulator outlet valve, gas control panels and analyzer sampling system applications
- Handwheel, lever, and indicating handwheel options



### NOVA AOP (Catalog 4515)

- General purpose, high cycle, compact valve
- For gas control panels and analyzer sampling system applications
- Normally open and normally closed
- Various actuation pressures available



### NV55 (Catalog 4515)

- General purpose, high flow compact valve
- For flowing large volumes of corrosive and non-corrosive fluids



### FS190 (Catalog 4515)

- Excess flow shut-off valve
- Manual or pneumatic actuation
- Non-attitude sensitive
- Six pressure/flow limit settings
- Available with welded fittings as well as 1/4" NPT female fittings
- Clear indication of operating position – either “Open (Reset)” or “Auto (Shut Off)”



### 944AOPHPNCSP (Catalog 4515)

- High pressure air operated valve
- Reliable, accurate performance
- Opening function incorporates hydraulics
- Available with 1/4" NPT female threads



### 16 Series (Catalog 4515)

- High pressure valve for gas manifold/box systems
- 316L SST machined body design
- Metal-to-metal diaphragm seal
- Packless valve design

Valve Groups	Model Series	Product Description	Maximum Operating Pressure	Temperature		Cv			Body Material			Actuation		Catalog
				Min	Max	0.1	0.3	0.6	Brass	Stainless Steel	Alloy	Manual	Pneumatic	
Diaphragm Valves	NOVA Series	Diaphragm Springless	250 psig 17 barg	-15 F -26 C	150 F 66 C	x			x	x	x	x		4515
	NOVAAOP	Diaphragm Springless	125 psig 9 barg	-15 F -26 C	150 F 66 C	x			x	x	x		x	4515
	NV55	Diaphragm Springless	250 psig 17 barg	-15 F -26 C	150 F 66 C			x		x		x	x	4515
	944AOPHPNCSP	Diaphragm Springless	3500 psig 241 barg	-40 F -40 C	150 F 66 C		x			x			x	4515
	16 Series	Diaphragm Spring	3000 psig 207 barg				x			x		x	x	4515

# Regulators

## Pressure Regulators



### NPR4100 (Catalog 4511)

- Negative pressure regulation
- Internally threadless design
- Convoluted Hastelloy C-22® diaphragm
- For delivery of low pressure gases from liquid sources
- White knob indicates negative pressure



### IR4000 Series (Catalog 4511)

- Internally threadless design
- Convoluted Hastelloy C-22® diaphragm
- Available in 316L SST, Brass, Hastelloy C-22®, Monel®
- Seals available for nitrous oxide and hydrocarbon applications
- Low dead volume
- General purpose for instrument/analyzer and semiconductor applications



### IR5000 Series (Catalog 4511)

- Internally threadless design
- Large convoluted Hastelloy C-22® diaphragm
- Greater sensitivity for precise pressure control
- For analyzer system gas management and instrument calibration



### HFR900 (Catalog 4511)

- High flow regulator
- Self-contained replaceable valve seat
- For corrosive and noncorrosive fluid applications
- Available in 316L SST and Brass



### HF1200 (Bulletin HF1200)

- High flow welded regulator
- Inlet pressure up to 1,250 psig (86 barg)
- 1.2 Cv
- Large convoluted diaphragm provides stable pressure control





### IR6000 Series (Catalog 4511)

- Dual stage regulator
- Internally threadless design
- Convuluted Hastelloy C-22® diaphragm
- Available in 316L SST, Brass, Hastelloy C-22®, Monel®
- Virtually eliminates supply pressure effect
- Provides cylinder gas pressure reduction in refineries, process analytical systems and specialty gases



### APR66 (Catalog 4511)

- High pressure piston sensing regulator
- Low actuating torque
- Pressures up to 6000 psig (413.7 barg)
- Available in 316L SST and Brass



### 959 Series (Catalog 4511)

- Tied diaphragm design to minimize regulator creep
- Internally threadless design
- Metal to metal diaphragm seal
- Available in 316L SST, Brass and Hastelloy C-22®



### DM3000 (Catalog 4518)

- Miniature pressure regulator for gas instrumentation applications
- ANSI/ISA SP76.00.02 modular surface mount interface
- No threads in wetted area
- Critically dampened to improve flow stability
- Faster purge times

Regulator Groups	Model Series	Type	Pressure		Cv		Body Material				Connections				Catalog
			Maximum Inlet Pressure	Maximum Outlet Pressure	Min	Max	316L SS	Brass	Hastelloy C-22®	MONEL®	Min FNPT	Max FNPT	Compression	Face Seal or Tube	
Single Stage	NPR4100	Absolute Pressure	250 psig 17 barg	-26 in Hg to 10 psig -1.8 in Hg to .7 barg	0.02	0.15	x	x	x	x	1/8"	3/8"	x		4511
	IR4000	General Purpose	4000 psig 276 barg	500 psig 34 barg	0.02	0.15	x	x	x	x	1/8"	3/8"	x		4511
	IR5000	Sensitive	3500 psig 241 barg	250 psig 17 barg	0.02	0.15	x		x		1/8"	1/2"	x		4511
	HFR900	High Flow	500 psig 34 barg	150 psig 10 barg	0.85	0.85	x	x			1/4"	1/2"	x		4511
	APR66	High Pressure	6000 psig 414 barg	6000 psig 414 barg	0.04	0.04	x	x			1/8"	1/4"			4511
	Quantum 959	Tied Diaphragm	3500 psig 241 barg	150 psig 10 barg	0.04	0.20	x		x		1/4"	1/4"		x	4511
	DM3000	Surface Mount					x								4518
	HF1200	High Flow	1250 psig 86 bar	200 psig 14 bar			x				1/2"	3/4"	x	x	HF1200

# Regulators

## Back Pressure Regulators



### ABP1 (Catalog 4510)

- Reduce contamination and accurately control back pressure
- Internally threadless design
- Convoluted Hastelloy C-22® diaphragm
- Integral diaphragm stop
- Available in 316L SST, Brass, Hastelloy C-22®, Monel®



### ABP3 (Catalog 4510)

- Internally threadless design
- Provides sensitive pressure adjustments
- Large convoluted Hastelloy C-22® diaphragm
- Integral diaphragm stop
- Available in 316L SST, Brass, Hastelloy C-22®



### BPR50 (Catalog 4510)

- For use with corrosive and non-corrosive fluids
- Adjustable from 100 psi (6.7 bar) to 2000 psi (138 bar)
- Piston sensed high pressure back pressure regulator
- Available in 316L SST

Regulator Groups	Model Series	Type	Pressure	Cv		Body Material			Connections		Catalog
			Maximum Inlet Pressure	Min	Max	316L SS	Hastelloy C-22®	Monel®	Min FNPT	Max FNPT	
Back Pressure	ABP1	General Purpose	Up to 500 psig 34 barg	0.06	0.30	X	X	X	1/8"	1/4"	4510
	ABP3	Sensitive	Up to 60 psig 4 barg	0.06	0.30	X	X		1/8"	1/4"	4510
	BPR50	High Pressure	Up to 2500 psig 172 barg	0.45	0.45	X			1/4"	1/4"	4510



VERIFLO  
www.parker.com/veriflo

# Vaporizing Regulators



## AVR3 (Catalog 4512)

- Steam heat design
- Internally threadless design
- Available in 316L SST, Monel®
- Internal liquid volume only .5cc
- Convoluted Hastelloy C-22® diaphragm



## AVR4 (Catalog 4512)

- Electrical heat design
- Field serviceable heat transfer element
- CSA, Cenelec, and ATEX certified
- Internally threadless design
- 120v or 240v, 50/60 Hz
- Convoluted Hastelloy C-22® diaphragm
- Available in 316L SST, Monel®

Regulator Groups	Model Series	Type	Pressure		Cv		Body Material		Connections		Catalog
			Maximum Inlet Pressure	Maximum Outlet Pressure	Min	Max	316L SS	MONEL®	Min FNPT	Max FNPT	
Vaporizing Regulators	AVR3	Steam Heated	4000 psig 276 barg	500 psig 34 barg	0.06	0.06	X	X	1/8"	1/8"	4512
	AVR4	Electrically Heated	4000 psig 276 barg	500 psig 34 barg	0.06	0.06	X	X	1/8"	1/8"	4512

# Flow Controllers



[www.parker.com/porterinstrument](http://www.parker.com/porterinstrument)

Porter Instrument specializes in the design and manufacture of precision instruments and systems for the measurement and control of low flow gases and liquids.



## Gas Mass Flow Controllers (Catalog FM-1041 & FM 441)

- Models available with flow ranges of 0-5 sccm to 0-1000slpm N<sub>2</sub>
- Responds to a step change in setpoint in less than one second
- Accuracy options down to 1% of rate
- Available with Analog or Digital I/O
- Local or remote setpoint and display capability



## Digital Liquid Mass Flow Controllers (Bulletin FM-998)

- Thermal measurement system yields accurate measurement with less than a 5°C increase in fluid temperature
- Exclusive control circuitry, combined with a piezoelectric-actuated control valve, provides fast, stable control at low flow rates



## Flowmeters (Catalog FM-1058)

- Variable area flowmeters include 65mm and 150mm scale length tube assemblies
- Available in either forged body or side-plate construction
- Interchangeable flow tube assemblies and valves allow configuration changes without removal from process system

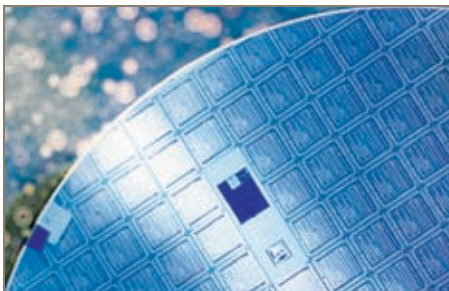


## Instrument Pressure Regulators (Catalog FM- 1057)

- All models are direct acting, non-relieving and are cleaned for analytical instrument service
- Designed specifically to provide high resolution control at the low flow rates typical in instrumentation applications
- Available with special port locations, manifold mount configurations, or with the regulator integrated into a larger, multi-functional package



# PFA/PTFE Products



## Fluoropolymer components

Durable, leak free fluoropolymer products are used in a variety of industries, including semiconductor manufacturing, chemical/food/pharmaceutical/biomedical processing, as well as analytical instrumentation.

Partek fluoropolymer products are recommended for applications that encounter pressures below 120 psig (8.27 barg), and corrosive media at temperatures up to 400°F (204°C). Fluoropolymer valves and fittings offer corrosion protection and are used to ensure media/system purity. The wetted surfaces of all products are of chemically inert corrosion resistant PFA or PTFE. Partek products are available from 1/8" up to 1" in size.

- **Parflare PFA Tube Fittings:** Parflare fittings provide low dead volume, which decreases the possibility of particle entrapment and bacterial growth.
- **Pargrip PFA Tube Fittings:** Perfect for applications where ease of assembly is a requirement. Grooved tubing is not required.
- **Parbond PFA Fusible Pipe Fittings:** Parbond fittings welded design eliminates threaded connections and entrapment areas and creates a leak free connection.
- **PFA Pipe Fittings:** Available in a variety of configurations, all with standard NPT threads.
- **PFA Valves, Gauge Protectors, Thermocouple Fittings and Spray Guns:** High cycle life, all fluoropolymer construction, with application tested and proven designs.
- **PTFE Valves, Regulators, and Flowmeters:** Wetted areas are manufactured from fluoropolymer material which offers unmatched corrosion protection and high cycle life.



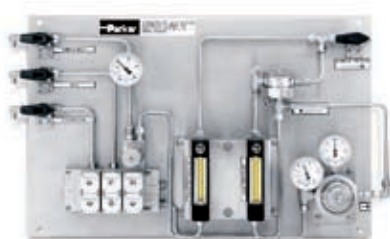
[www.parker.com/partek](http://www.parker.com/partek)

(Catalog PSM Partek)

# Analytical Systems



Our chemical/petrochemical process analytical systems provide a sound model for both North American and European markets, adapting with minor modifications to environmental segments, as well as laboratory and pilot plant markets. They also serve as a basis for power and pharmaceutical analytical segments. No other single supplier can offer a more complete, advanced, or adaptable sample analysis system.



## Vent Recovery Panel (Bulletin 4141-VR)

- Pre-engineered compact instrument panel that includes fittings, valves, stream switching valve, regulators, and gauges
- System adjusts for variations in gas supply pressures and flows



## Vent Master™ (Catalog 4142-VM)

- Pre-engineered compact instrument panel that includes regulators, gauges, rotometer, an eductor and a separate pressure controller
- Creates a stable pressure within the analyzer shelter vent header system
- Provide analysis accuracy with .06% over a vent header flow of 0-18SLPM



### **IntraFlow™** (Catalog 4250)

- Modular instrument system
- ISA/ANSI SP 76.00.02 compliant
- Every component is upgradeable to Gen 2 & 3 NeSSI Technologies
- Vacuum to 500 psig (34 barg)
- System design software available



### **R-max™** (Catalog 4140-R)

- Surface mount technology for stream switching valves
- Low internal volume to reduce system purge time
- Low pressure actuation of valves-40 psig (-2.76)
- Rated from vacuum to 500 psig (34 barg)



### **ChangeOver System** (Catalog 4511)

- Compact turnkey module designed for continuous gas management
- Optional outlet regulator to control application specific outlet pressure
- Audio/visual alarm annunciator available
- Available in 316L stainless steel and brass
- Suitable for oxygen service

# Hose/Tubing/Quick Couplings



## **Push-Lok® Hose** (Bulletin 4281-B1-US)

- Unique seal ensures reliability and durability for clean-environment use
- No clamps or special tools required for installation
- Inner liner is an extruded, synthetic rubber, resistant to petroleum-base oil, air and water



## **Quick Couplings** (Catalog 4220)

- Spill-free designs virtually eliminate fluid loss upon disconnection and minimize air inclusion during connection
- Minimize air inclusion during connection
- Double shut-off flush mating valves suitable for seal off media in corrosive applications
- Working pressures from 300 psi (21 bar) to 5,000 psi (3445 bar)



## **Stainless Steel Metal Hose** (Catalog 4690-MH)

- For extreme conditions where other hoses fail
- For temperatures up to 1,500°F (816°C)
- Frequently used for the conveyance of liquid nitrogen
- Provides the lowest permeation rate of any hose available



## **Multitube® Instrument and Heat Trace Tubing** (Catalog 4200-M-1)

- Available in a variety of configurations
- For containment, transmission and control of pneumatic signals, gases and liquids
- Materials include copper, stainless steel, metal alloys and PFA/PTFE

# Tools and Accessories



## Tube Fabrication Equipment (Catalog 4290)

- High quality hand benders, tube cutters, deburr tools and preset tools
- Tube benders from 1/8" to 1" size
- Tube cutter rated for 316 stainless steel tubing
- Par-Lok® wrenches with 360° snap-action for flexibility
- Preset installation kits for assembling tube fittings in close spaces



## Sample Cylinders (Catalog 4160-SC)

- 1800 psig (124 barg) DOT rated sample cylinders
- Stainless steel construction
- ANSI/ASME B1.20.1 internal pipe threads



## Brass Push-to-Connect Fittings (Bulletin 3531-QRG/USA)

- Prestolok® brass and Prestolok II® composite push-to-connect fittings are designed for use with nylon, polyethylene, polyurethane and soft metal tubing
- Ideal for pneumatic applications
- Equipped with stainless steel grab rings eliminating need for tube supports
- No tools required for installation
- Designed for side-loading



## Texas Thermowells (Catalog 4240)

- Flanged thermowells are available in partial penetration and full penetration welds
- Each thermowell is stamped to provide full material traceability
- Teflon® coating and Wake Frequency Calculations available
- Wide variety of special alloy material in stock ready for manufacturing



# Sanitary and Biopharmaceutical



Parker offers a full line of fittings, valves and related process components for the food, beverage, dairy and biopharmaceutical process industries. All components meet or exceed the stringent standards as set forth by these industries.



## Sanitary Fittings (Catalog 4270)

- Butt weld, clamp, bevel seat and other fitting styles available
- ASME-BPE fittings for use in pharmaceutical and biotech applications
- Finishes from unpolished to 10RA electropolish available
- A large variety of threaded, socket weld, flanged and DIN adapters is also available



## Sanitary Valves (Catalog 4270-VFC)

- Sanitary versions of 3-pc ball, butterfly, check and sample valves
- Flow components such as sight-glasses also available
- Electric and pneumatic actuators with options such as limit switches, position indicators and solenoid valves



## Sanitary Gaskets (Catalog 4270)

- Sanitary gaskets and o-rings that meet all applicable 3A and Pharmacopia Class 6 standards
- Wide variety of size and materials such as Buna, EPDM, silicone, PTFE, SFY and exotic compounds for specialty applications
- Color-Grip gaskets available in a variety of colors to support SOP programs and eliminate cross contamination
- Screen, orifice, metal and sampling gaskets for tough or unique applications



## Product Selection Guide CD Operating Instructions

Parker's Product Selection Guide CD contains electronic versions of all catalogs referenced in the Product Selection Guide document as well as additional Parker product lines.

### To use the CD

Simply place the disc in your CD drive.

An autorun program on the CD will search your computer for the Adobe® Acrobat® Reader® program, version 5.0 or higher.

If Acrobat Reader is found, the opening screen of the CD will appear. From the opening screen, you can view this Product Selection Guide, go to specific product categories or choose a specific catalog.

If Acrobat Reader is not found, it will be installed on your hard drive and then the opening screen of the CD will appear. From the opening screen, you can view this Product Selection Guide, go to specific product categories or choose a specific catalog.

## Parker Process Control Divisions

### Instrumentation Products Divisions

Connectors Operation  
1005 A Cleaner Way  
Huntsville, AL 35805  
Phone: (256) 885-3800  
Fax: (256) 881-5072  
[www.parker.com/ipdus](http://www.parker.com/ipdus)

Valve Operation  
2651 Alabama Highway 21 North  
Jacksonville, AL 36265  
Phone: (256) 435-2130  
Fax: (256) 435-7718  
[www.parker.com/ipdus](http://www.parker.com/ipdus)

Europe  
Riverside Road  
Pottington Business Park  
Barnstaple, Devon EX31 1NP  
Phone: (44) 1271-313131  
Fax: (44) 1271-373636  
[www.parker.com/ipd](http://www.parker.com/ipd)

Thermowell Operation  
6575 Tram Road  
Beaumont, TX 77713  
Phone: 409-924-0300  
Fax: 409-924-0301  
[www.texasthermowell.com](http://www.texasthermowell.com)

### Parflex Division

300 North Freedom Street  
Ravenna, OH 44266  
Phone: 330-296-2871  
Fax: 330-296-8433  
[www.parker.com/parflex](http://www.parker.com/parflex)

### Brass Products Division

300 Parker Drive  
Otsego, MI 49078  
Phone: 269-694-9411  
Fax: 269-694-4614  
[www.parker.com/brassprod](http://www.parker.com/brassprod)

### Quick Coupling Division

8145 Lewis Drive  
Minneapolis, MN 55427  
Phone: 763-544-7781  
Fax: 763-544-3418  
[www.parker.com/qcd](http://www.parker.com/qcd)

### Hose Products Division

30240 Lakeland Boulevard  
Wickliffe, OH 44092  
Phone: 440-943-5700  
Fax: 440-943-3129

### Porter Instrument Division

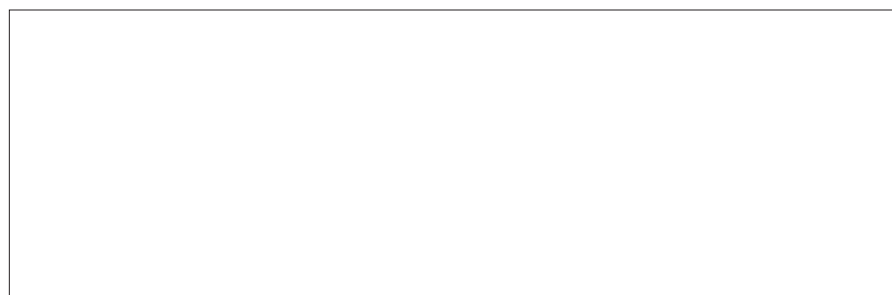
245 Township Line Road  
Hatfield, PA 19440  
Phone: (215) 723-4000  
Fax: (215) 723-2199  
[www.parker.com/porterinstrument](http://www.parker.com/porterinstrument)

### Veriflo Division

250 Canal Boulevard  
Richmond, CA 94804  
Phone: (510) 235-9590  
Fax: (510) 232-7396  
[www.parker.com/veriflo](http://www.parker.com/veriflo)

### Veriflo Division Partek Operation

7075 East Southpoint Road  
Tucson, AZ 85706  
Phone: (520) 574-2600  
Fax: (520) 574-2700  
[www.parker.com/partek](http://www.parker.com/partek)



Your Local Authorized Parker Distributor



## Parker Worldwide Product Information

U.S.: 1-800-C-Parker (1-800-272-7537)

Europe: 00-800-C-Parker-H (00800-27-27-5374)